

Luvaweld®

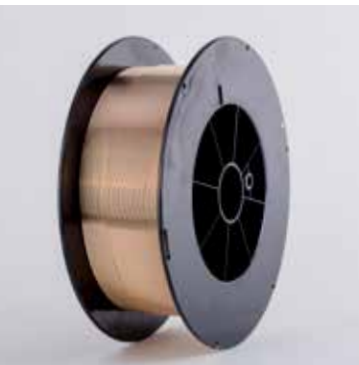
MIG and braze welding wire

Wire characteristics:

- Seamless
- Tangle Free
- Consistent roundness, diameter and helix
- Homogeneous
- Contaminate free

Value add:

- Experienced technical support and on site assistance
- Single integrated global supply chain
- Customer-specific wire to meet exact specifications
- Strong customer focus with outstanding customer service
- One stop shopping for wire, MIG brazing tips and resistance welding electrodes



About Luvata

Luvata is a world leader in metal solutions manufacturing and related engineering services to industries such as renewable energy, automotive, healthcare, and power generation and distribution. The company's continued success is attributed to its longevity, technological excellence and strategy of building partnerships beyond metals. Employing approximately 1,400 staff in 6 countries, Luvata works in partnership with customers such as ABB, CERN, Siemens and Toyota. Luvata is a group company of Mitsubishi Materials Corporation.

Specifications

| CDA | C65600 | C61000 | C61800 |
|--|-------------------------|----------------------|--------------------------|
| Din 1733 | SG-CuSi ₃ Mn | SG-CuAl ₈ | SG-CuAl ₁₀ Fe |
| Material No. | 2.1461 | 2.0921 | 2.0937 |
| En 14640 | CuSi ₃ Mn | CuAl ₈ | CuAl ₁₀ Fe |
| BS2901 part 3 | C 9 | C 28 | C 13 |
| AWS A 5.7 | ER CuSi-A | ER CuAl-A1 | ER CuAl-A2 |
| Electrical conductivity (S*m/mm ²) | 3-4 | 8 | 7 |
| Density (kg/dm ³) | 8.5 | 7.7 | 7.5 |
| Solidus-Temperature (°C) | 910 | 1030 | 1030 |
| Liquidus-Temperature (°C) | 1025 | 1040 | 1090 |
| Tensile strength Rm (MPa) | 330-370 | 390-450 | 390-500 |
| Hardness (HB) | 80-90 | 140 | 140 |

Wire Diameter

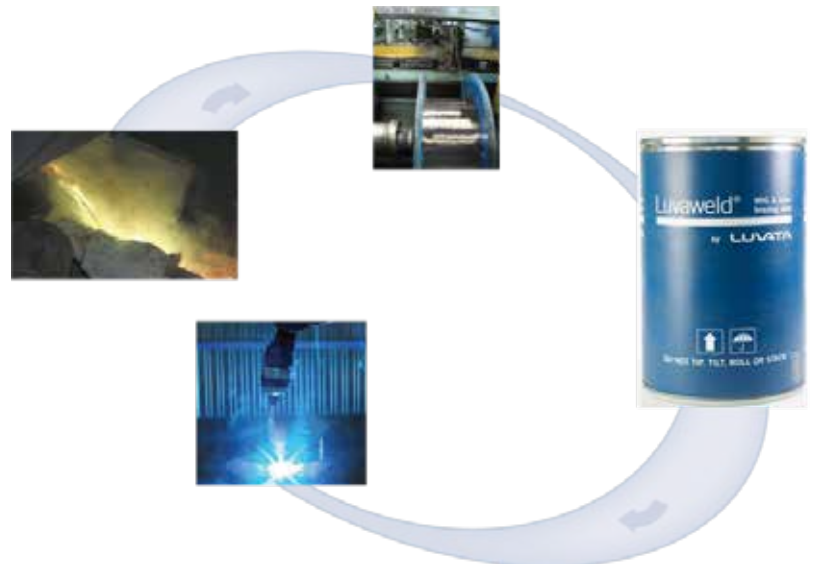
| | | | | | | | | |
|-------------|--------|--------|--------|--------|--------|--------|--------|--------|
| Inches | 0.030" | 0.035" | 0.039" | 0.045" | 0.063" | 0.079" | 0.094" | 0.125" |
| Millimeters | 0.8 mm | 0.9 mm | 1.0 mm | 1.2 mm | 1.6 mm | 2.0 mm | 2.4 mm | 3.2 mm |

Wire Packaging

| | Spools | | | Drums | | |
|-----------|--------|--------|--------|---------|---------|---------|
| Pounds | 10 lbs | 22 lbs | 33 lbs | 250 lbs | 441 lbs | 500 lbs |
| Kilograms | 4.5 kg | 10 kg | 15 kg | 100 kg | 200 kg | 227 kg |

Fully integrated production for a complete welding solution

In addition to welding wire, Luvata also offers a line of dispersion strengthened copper contact tips for more demanding applications requiring high wear characteristics and resistance to welding.



Luvata Ohio Inc.
1376 Pittsburgh Drive
Delaware
Ohio 43015
USA
Tel: +1 740 363 1981

Luvata Welwyn Garden Ltd.
Centrapark
Bessemer Road
Welwyn Garden City
Hertfordshire AL7 1HT
United Kingdom
Tel: +44 1707 379789

MM Metal Products Suzhou
53 Sanzhuang Street
Weiting Town
Suzhou Industrial Park
Jiangsu Province
215121 China
Tel: +86 512 6285 1018

Luvata Sao Paulo
Avenida dos
Autonomistas, n° 4.900
Galpão PR406-B
06194-060
Osasco - SP, Brazil
Tel: +55 11 3513 2003



luvata.com